

Finding Slope and Y-intercept

Name: _____ Date: _____

[learning target C]

Identify the slope and y-intercept in each equation:

1) $y = 3x + 22$

$m = \underline{\hspace{1cm}}$ $b = \underline{\hspace{1cm}}$

2) $y = 9x + 5$

$m = \underline{\hspace{1cm}}$ $b = \underline{\hspace{1cm}}$

3) $y = -8x + 7$

$m = \underline{\hspace{1cm}}$ $b = \underline{\hspace{1cm}}$

4) $y = 10 - 4x$

$m = \underline{\hspace{1cm}}$ $b = \underline{\hspace{1cm}}$

5) $y = x + 15$

$m = \underline{\hspace{1cm}}$ $b = \underline{\hspace{1cm}}$

6) $y = -2 - 12x$

$m = \underline{\hspace{1cm}}$ $b = \underline{\hspace{1cm}}$

[learning target A]

For each table below, identify the slope and y-intercept:

7)

X	Y
0	0
2	4
4	8
6	12
8	16

$m = \underline{\hspace{1cm}}$ $b = \underline{\hspace{1cm}}$

8)

X	Y
5	15
7	9
9	3
11	-3
13	-9

$m = \underline{\hspace{1cm}}$ $b = \underline{\hspace{1cm}}$

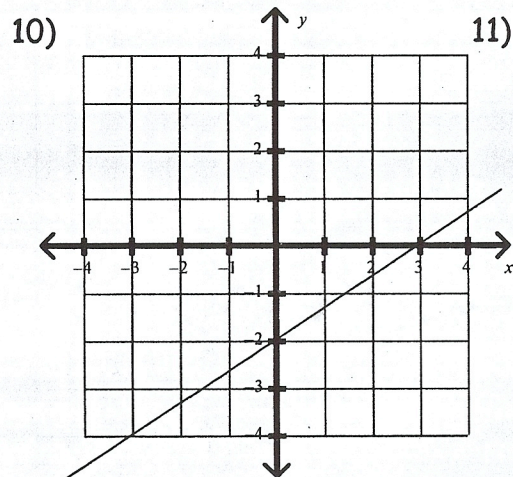
9)

X	Y
-10	125
0	175
10	225
20	275
30	325

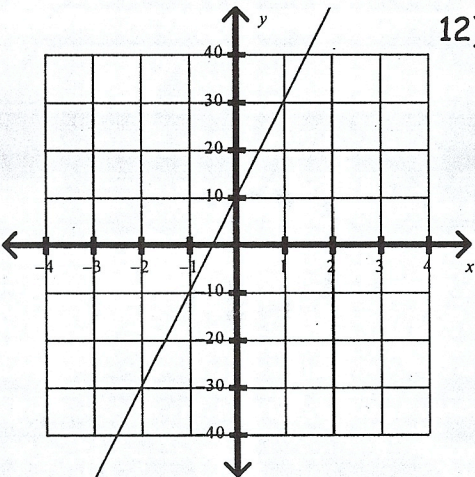
$m = \underline{\hspace{1cm}}$ $b = \underline{\hspace{1cm}}$

[learning target B]

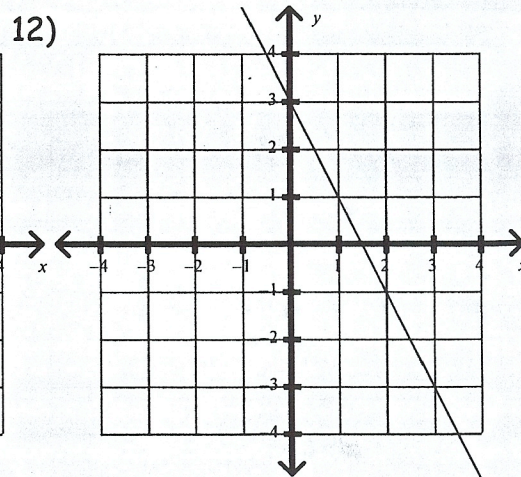
For each graph below, identify the slope and y-intercept:



$m = \underline{\hspace{1cm}}$ $b = \underline{\hspace{1cm}}$



$m = \underline{\hspace{1cm}}$ $b = \underline{\hspace{1cm}}$



$m = \underline{\hspace{1cm}}$ $b = \underline{\hspace{1cm}}$